

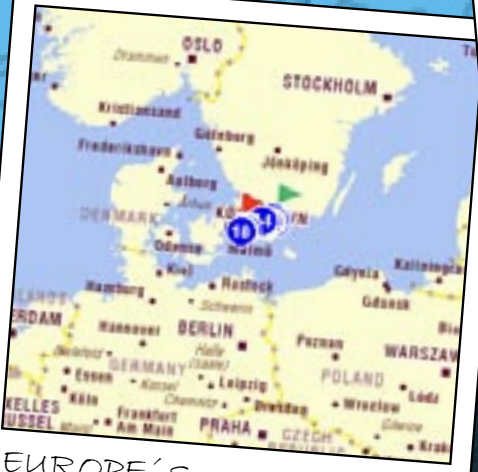
ORIENTEERING CENTER 2008 • ÅHUS • KRISTIANSTAD • EUROPE'S

EMG
2008

EMG SEPTEMBER 1-5, 2008
KRISTIANSTAD-SWEDEN

Beaches and forests

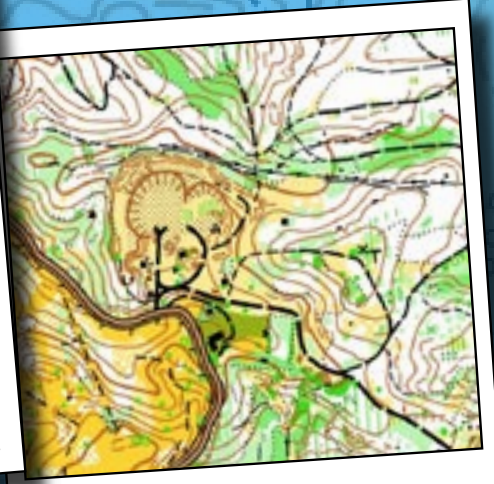
A taste of Sweden's most international terrain.
Frequent training camp for several national teams.



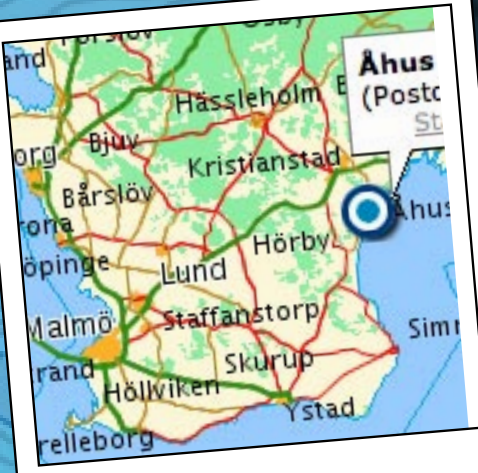
EUROPE'S
ORIENTEERING CENTER



FOREST AT DEGEBERGA.
SOUTH OF KRISTIANSTAD.



MAP OVER DEGEBERGA.



SKÅNE, EUROPE.



THE SHORE AT YNGSJÖ.
SOUTHEAST OF KRISTIANSTAD.



MAP OVER YNGSJÖ.

ORIENTEERING

SEPTEMBER 1-5, 2008 KRISTIANSTAD, SWEDEN EUROPE'S ORIENTEERING CENTER 2008

Venue

The EMG centre for orienteering is Kristianstad/Åhus (about 100 km NE. of Malmö).

Programme

- September 1. Monday,
Model Event.
- September 2. Tuesday,
Middle Distance Finals,
all competitors are allowed
to participate in the A-finals.
- September 3. Wednesday
Long Distance Qualification
Evening Banquet.
- September 4. Thursday
Resting day
Tourist programme.
- September 5. Friday
Long distance Finals A and B

Competition categories

Europe masters categories for all runners born 1973 or earlier:
M/W 35+, 40+, 45+, 50+, 55+, 60+,
65+, 70+, 75+, 80+, 85+, 90+.
Open classes for younger companions
are available each day at the competi-
tion center.

Courses and Winning times

EMG-courses are according to IOF standards.
Winning times for Long Distance A-finals are from 45 to 70 minutes. The qualification races will have 10-20 minutes shorter winning times. Winning times for Middle Distance finals are from 20 to 35 minutes.

Maps

IOF Standard
Long Distance, all categories
Scale 1:10 000 with eqv. 5 m
Middle Distance, all categories
Scale 1:7 500 with eqv. 2 m

Punching system

Electronic SportIdent.

Entry

Entry forms will be available from
July 1. 2007 on www.emg2008.com

Entry fees

EMG-classes received by:
May 31. 2008 105 EUR
June 1. and later 145 EUR
Entry fee includes model event,
qualification race and final races.

Terrain

The Kristianstad-area is well-known in the orienteering world for its many and different types of suitable terrain, and almost snow-free winters. That's why many national teams and club-teams visit us for our organized training-camps.

Middle Distance: Easy runnable pine forest without marshes with very detailed contours close to the Baltic Sea south of Åhus about 25 km SE of Kristianstad.
Long Distance: Runnable, hilly and mixed forest almost without marshes near Degeberga about 25 km S of Kristianstad.

Accommodation

A wide variety of accommodations (hotels, cottages, camping, summer houses) are available near the competition centre in Kristianstad / Åhus or the EMG centre in Malmö.
See www.emg2008.com

Travel

Airport
Kristianstad airport 10 km
Malmö airport 100 km
Copenhagen airport 140 km

Railway
Kristianstad

Visas

For non EU citizens check if visa is necessary for visiting Sweden

Tourist programme

Will be available via
www.pan-kristianstad.nu

